



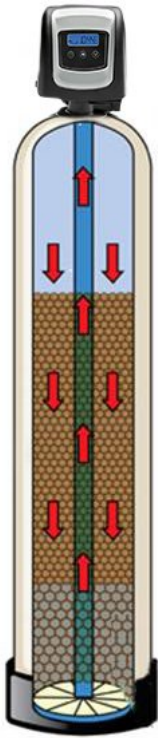
Chemical Free Filter



MODEL FFON-FFOC

Water

Essential for all dimensions of life.



FFON-FFOC MODEL

Experience the difference.

- Chemical free & salt free systems
- The most advanced well water filter ever designed and sold
- No harsh chemicals, no salt and nothing to add
- You just "set it and forget it"
- Automatic digital control and easy to program
- The most popular whole house iron & sulphur removal water filter
- High flow & robust control valve
- Flow rates from 5.0 gpm to 12.0 gpm
- The complete unit only requires 12" of floor space
- Power outage protective battery cell
- Say goodbye to stained laundry, tubs, sinks and horrible tasting water forever

Cycle 1 - BACKWASH:

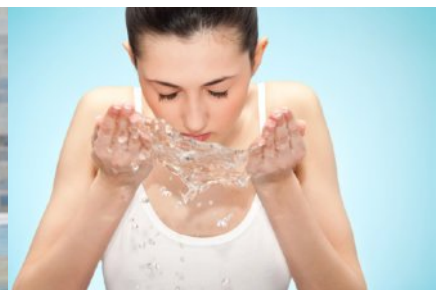
Water flows upwards through the bed, expanding the media and backwashing any precipitated iron and turbidity within the bed to the drain. The air is also evacuated from the tank.

Cycle 2 - AIR CHARGE:

The filter pulls a Super-charged cell of air into the tank to perform the oxidation process. It also replenishes any molecules of air that may have escaped during the backwash cycle or the previous days of service. During this process you can usually hear the sound of air being drawn in to the unit.

Cycle 3 - SERVICE POSITION:

Water enters the tank and is compressing throughout the air pocket on top of the tank starting the oxidation process. It then enters the special multi-blend media where all the oxidized precipitants and impurities are removed leaving you with crystal clear water.



519-835-7429